



President's Address Senate*

April 2013

* Previously given at GAA annual meeting



www.usask.ca/President

Contents

- **Snapshot** – Where are we now?
- **Goals** – Where are we going?
- **Challenges** – What prevents us from easily achieving our goals?



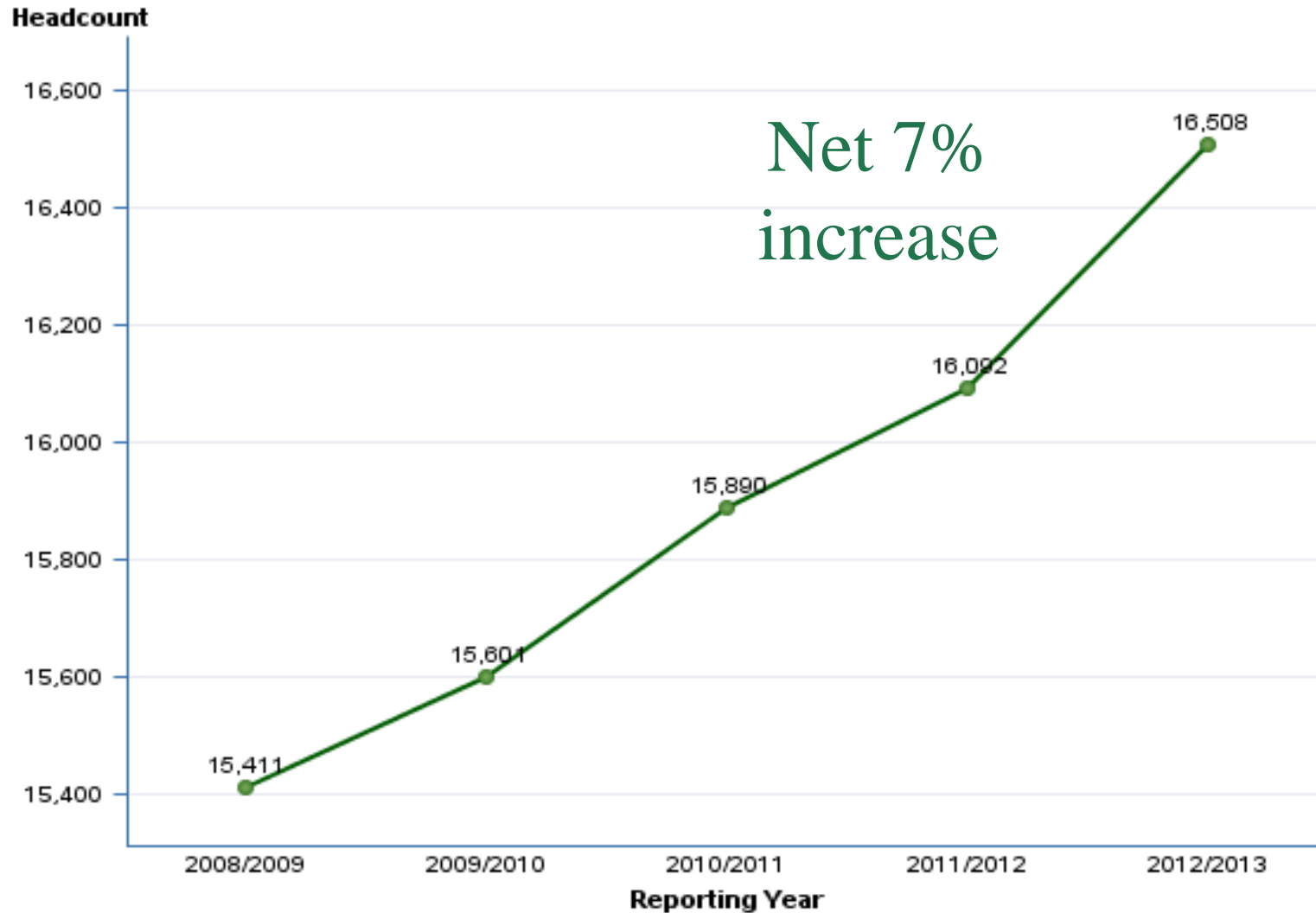
Unique Attributes

- Very diverse disciplinary coverage.
- We are known for integrated planning.
- We tend to be applications focused.
- We are land rich – 1865 acres on our main campus, of which 874 are core.
- We enjoy a good relationship with government.
- We have a beautiful campus.

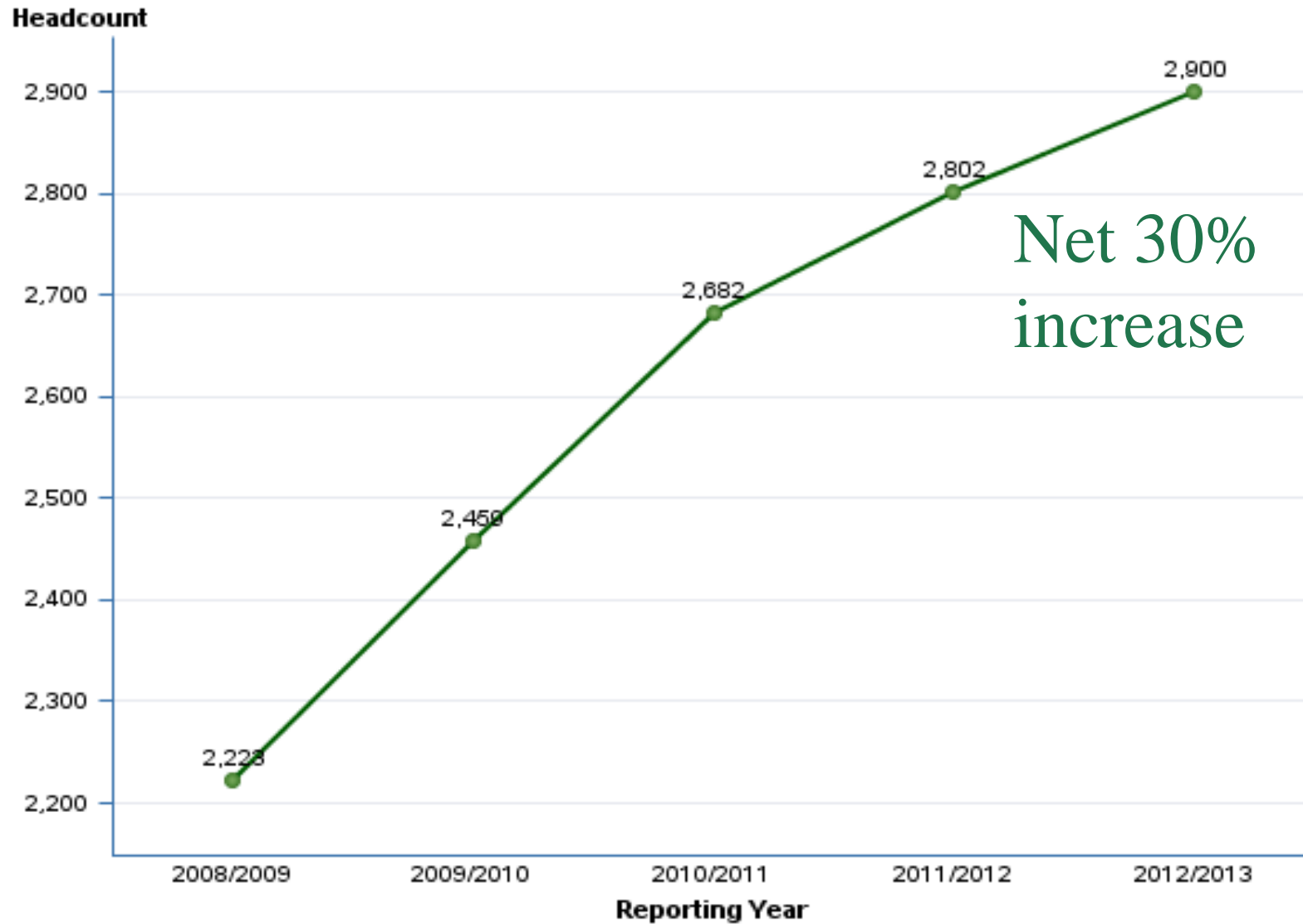


Student Demographics

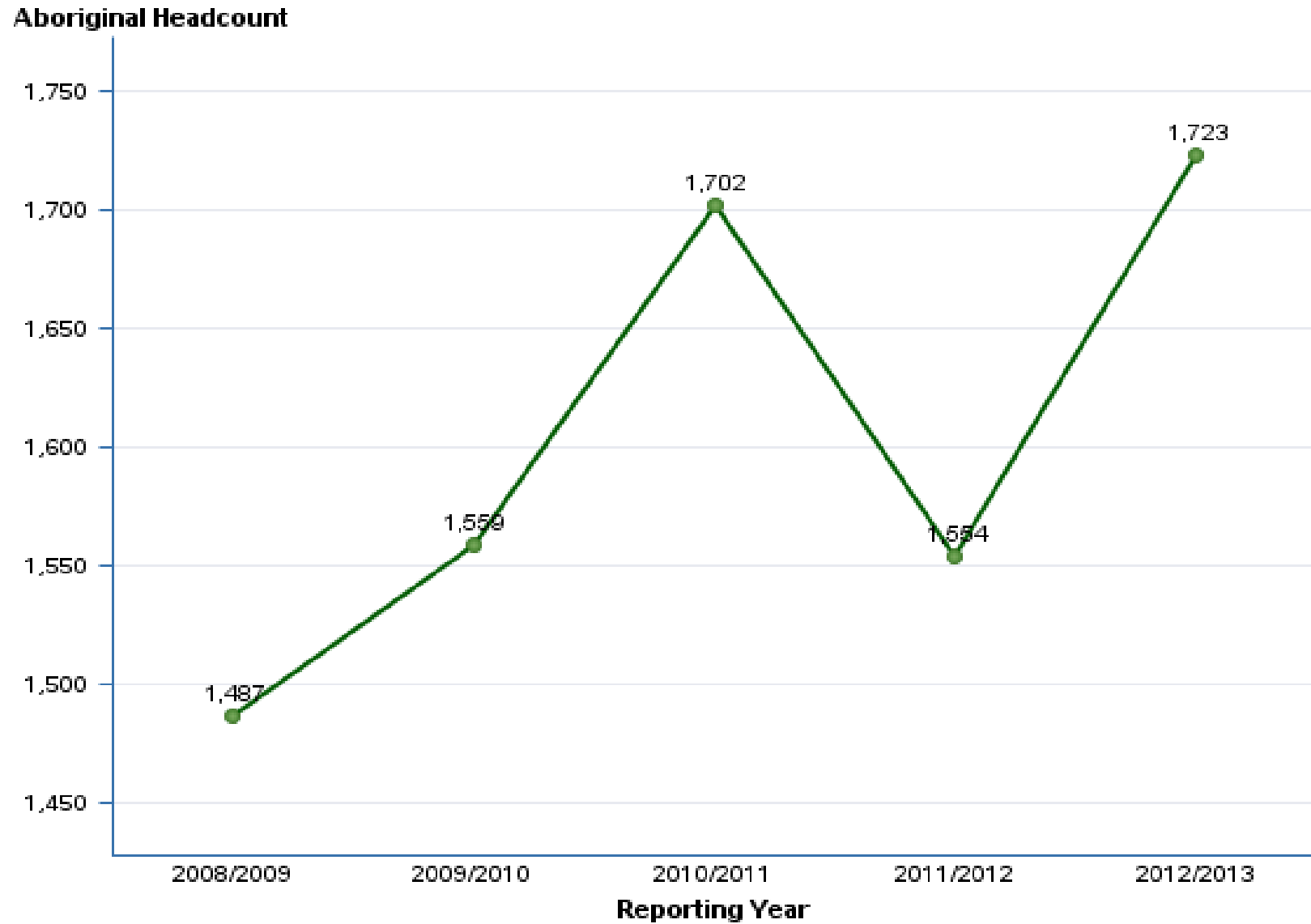
Winter Term Undergraduate Enrolment



Winter Term Graduate Enrolment

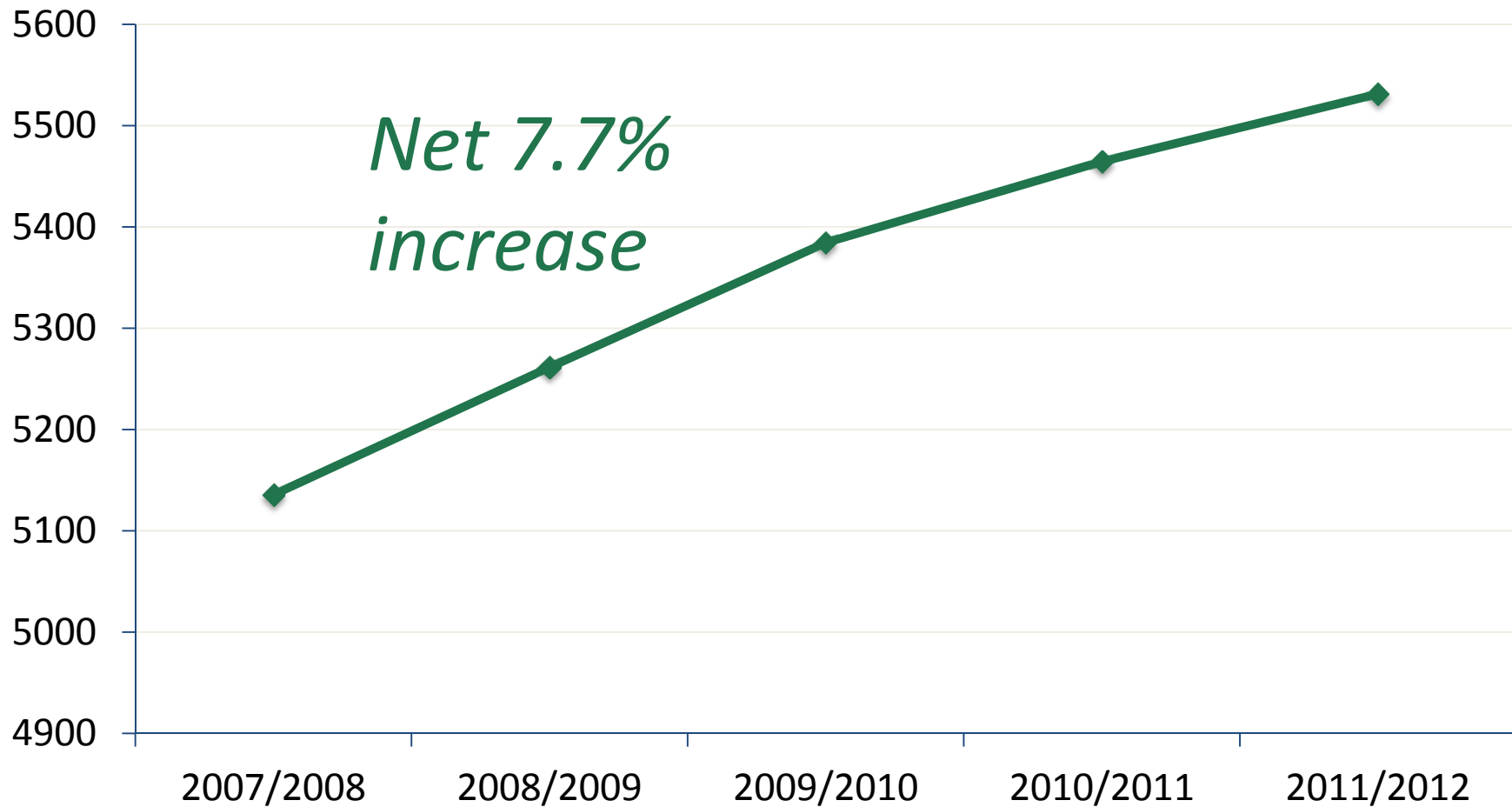


Winter Term Aboriginal Enrolment

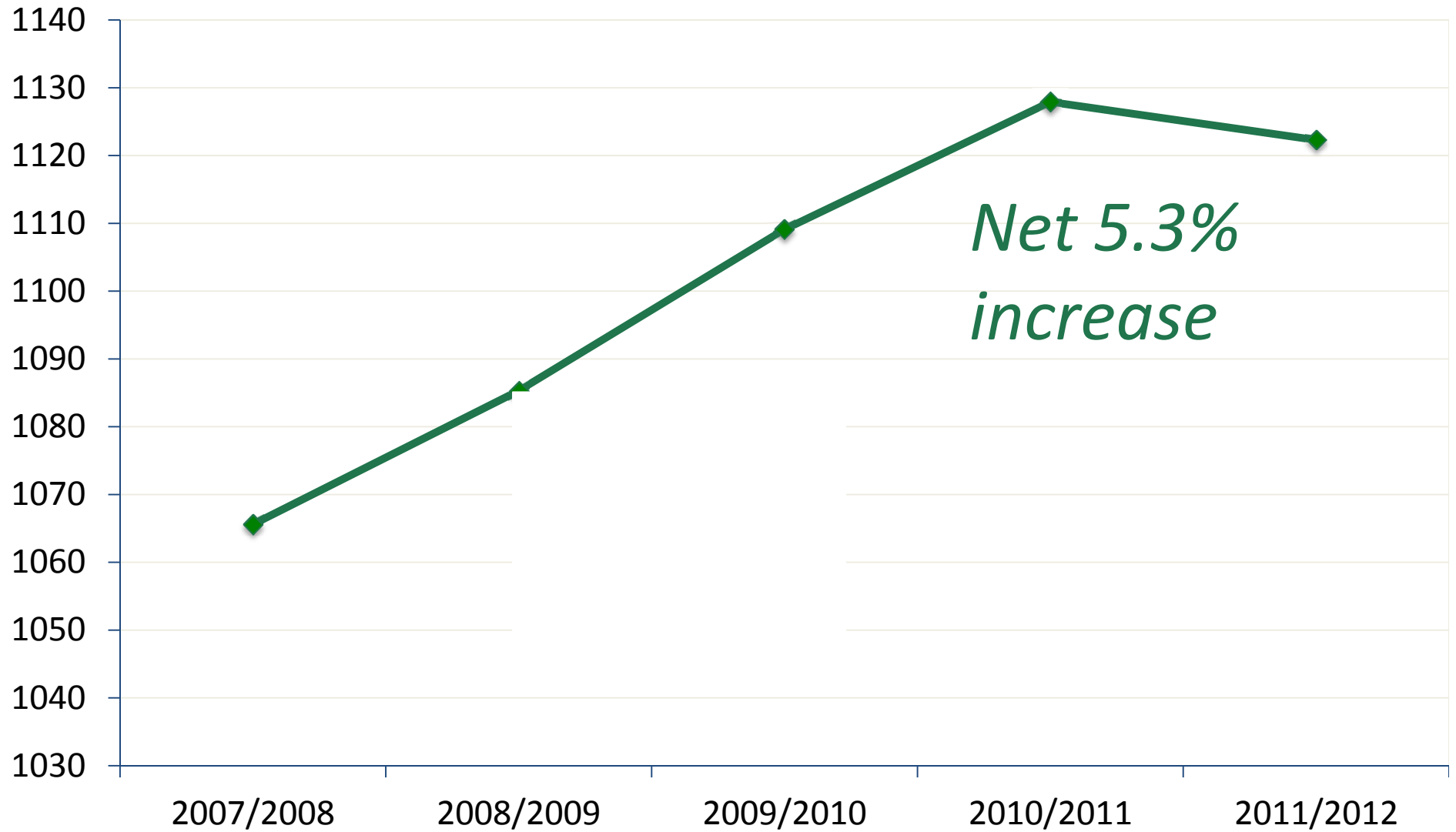


Faculty and Staff Demographics

Number of Total Employees



Number of Faculty

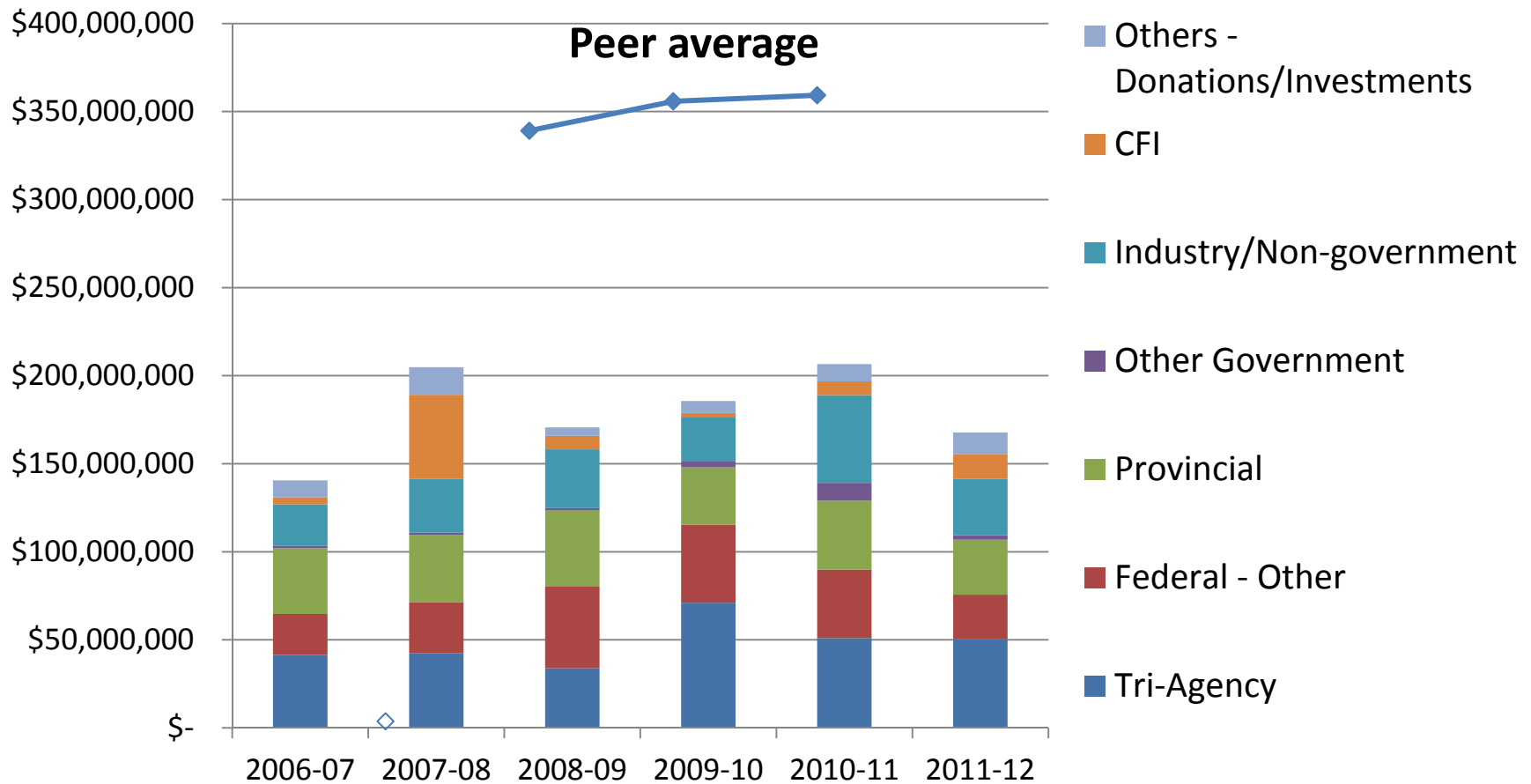


Percentage of Aboriginal Employees

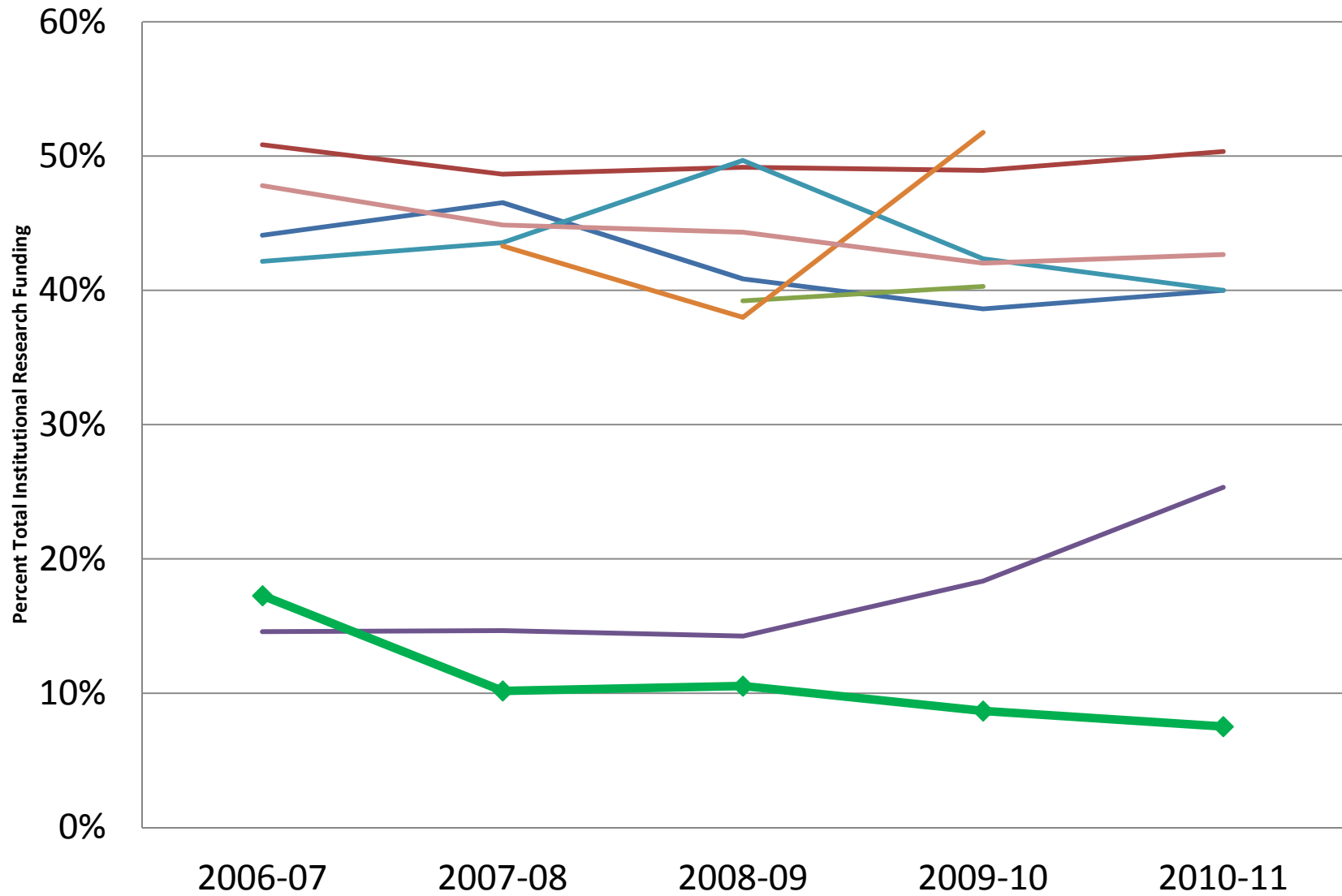


Research Funding

U of S Research Revenue

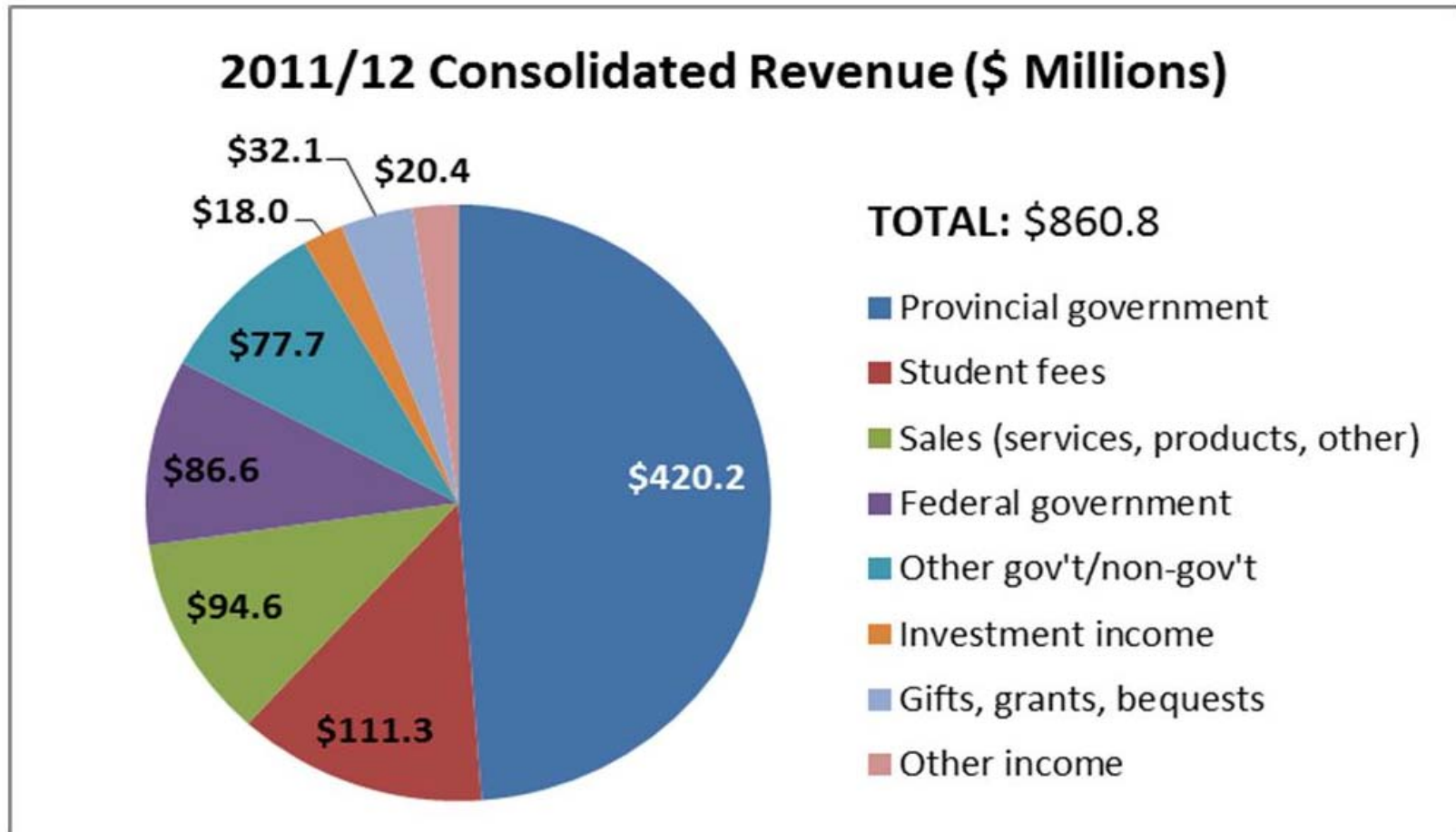


CoM Research Funding as a Percentage of Total Institutional Research Funding

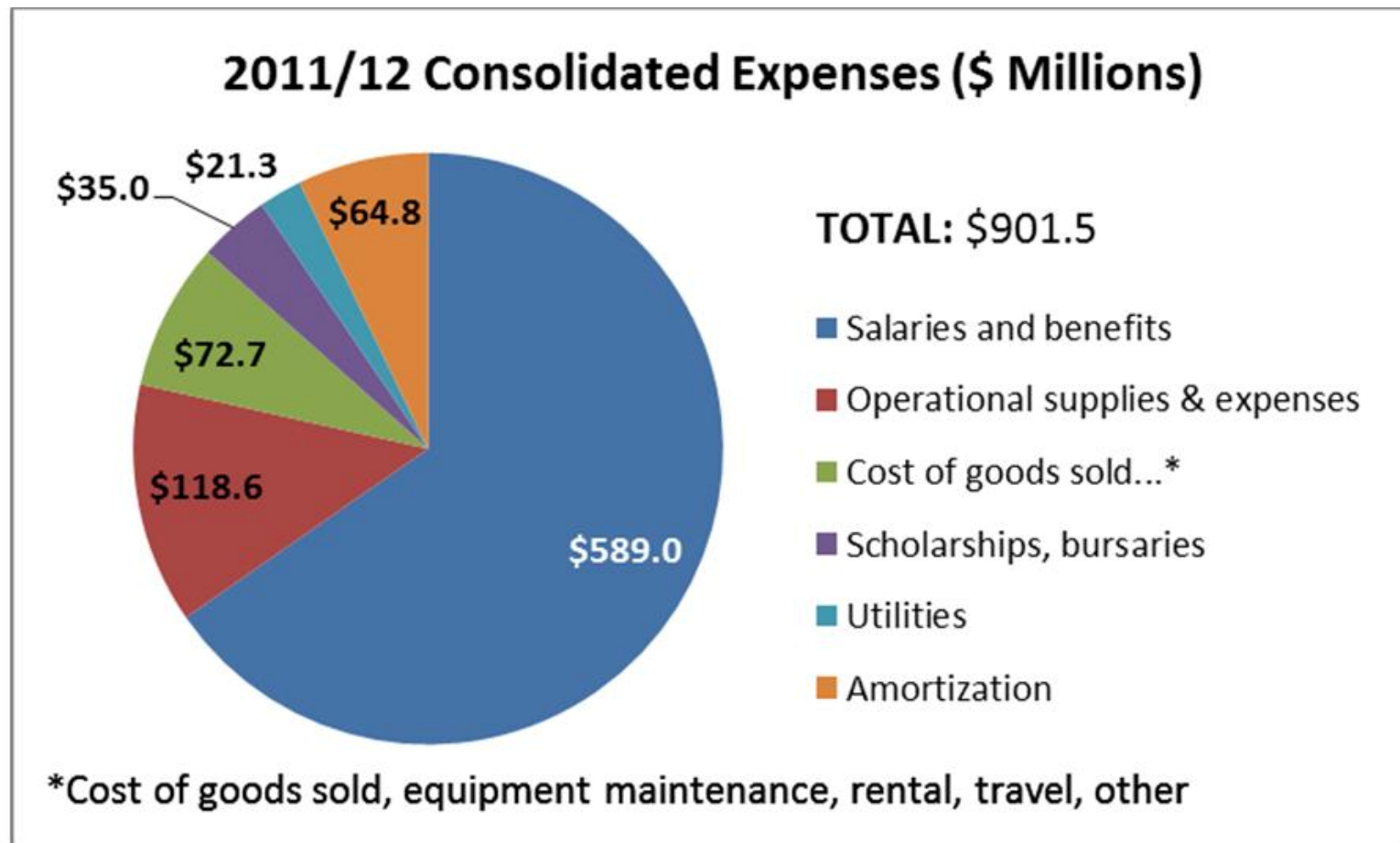


Institutional Funding

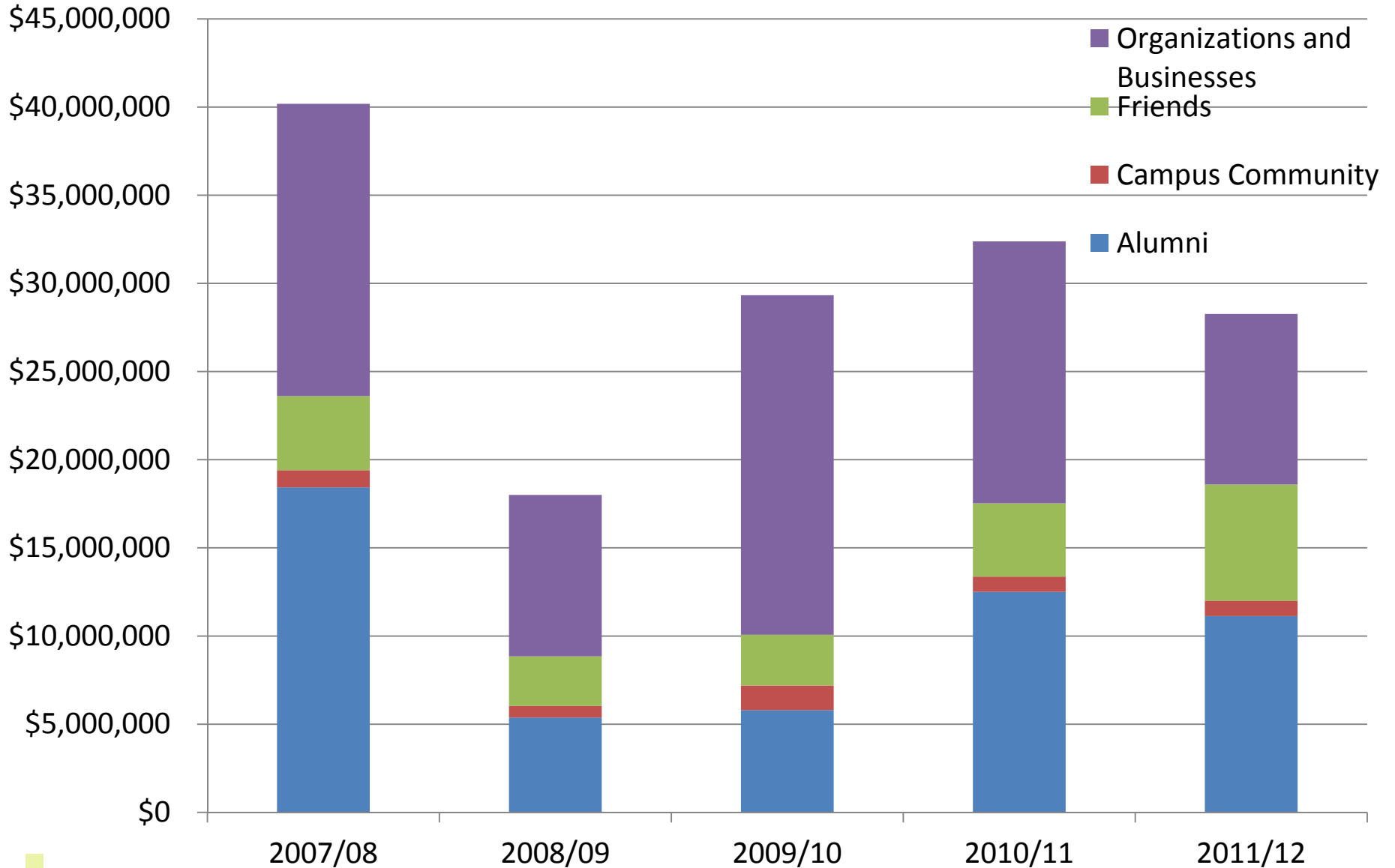
Total Institutional Revenue



Total Institutional Expenses



Fundraised Dollars



University Graduates

- 138,000 living alumni
 - 30% live in Saskatoon
 - 61% live in Saskatchewan
 - 95% live in Canada
- Five most populous areas with U of S Alumni
 - Saskatoon
 - Calgary
 - Regina
 - Edmonton
 - Prince Albert



Vision

The University of Saskatchewan is recognized as among the eminent research-intensive universities of North America; we lead the world in education and research on important themes that have an impact on our region, our nation and our world.



U15 – *We Have Arrived!*

- The U of S joined the U15 in March, 2011
 - That recognizes us as one of the most research-intensive universities in Canada
- U15 membership matters to
 - Government – makes us more visible and adds to our value as an economic driver.
 - Students – increases the value of their degree.
 - U of S – tells us who we should benchmark against.



Necessary Ingredients

- College of Medicine restructuring
- Expansion of First Nations, Métis and Inuit initiatives
- Financial sustainability
- Benchmarking vs. U15 peers



College of Medicine

- Many problems in CoM relate to governance issues
These require partnership of health regions, UofS and government to resolve long term
- We are making good progress on the plan the CoM developed and University Council approved.
- We have lots of room for improvement in education quality and in research intensity.



First Nations, Métis and Inuit Initiatives

- Gordon Oakes Red Bear Center moving forward.
- New tab on our front page website; working to add visible symbols as well.
- Part 1 of our two-part conference re Aboriginal initiatives went very well; Part 2 in summer.
- Interactive map of our educational relationships is available online.
- Working to expand our programs in the north:
Nursing, TEP, Arts and Sci., ICNGD, Ag., DME
- Self Declaration Campaign.



Financial Sustainability

- This is a challenging time for universities
 - We've done well relative to our peers*
 - We are fine this year, but have identified a structural, growing problem.*
- Workforce Planning – focus is on efficiencies we can achieve quickly
- TransformUS – review of all of our programs and services.
 - Result will be prioritization into categories*



Selected Successes of Note

Research

- Global Institute for Food Security
- CERC in infectious disease prevention

Students

- Victoria Cowan named a 3M student fellow
- First annual graduate student banquet

Others of Note

- Anniversary celebrations in Agriculture and Bioresources, Engineering, Law, Dentistry

