

**UNIVERSITY COUNCIL  
NOMINATIONS COMMITTEE  
REQUEST FOR DECISION**

---

---

**PRESENTED BY:** Bev Pain, Chair,  
Nominations Committee of Council

**DATE OF MEETING:** January 24, 2013

**SUBJECT:** **Nominations for VPFR Search Committee**

**DECISION REQUESTED:**

That Council approve the following nominations to the Search Committee for the Vice-President Finance and Resources:

**Dean McNeill, Music**

**Andrew Van Kessel, Animal and Poultry Science**

**Background**

University search procedures for senior administrators call for the nomination of two members of the General Academic Assembly (GAA) to serve on the Search Committee for the Vice-President Finance and Resources. As outlined in the search and review procedures for senior administrators, the Nominations Committee of Council nominates GAA members for this search committee and these nominations are voted on by Council. Nominations can also be made from the floor.

To assist the Nominations Committee in identifying interested GAA members, the Committee followed the procedure established for the presidential search and sent out a call for nominations. The Committee thanks those members of faculty who nominated others or volunteered themselves for service on this search committee.

**ATTACHMENT:**

VPFR search committee membership

List of recent Council appointments to search and review committees

University Organization chart showing responsibilities of VPFR

## ADDITIONAL INFORMATION

### Search Committee membership:

<b>VICE-PRESIDENT Finance and Resources</b> Chair - the President	Ilene Busch-Vishniac
Two members of the Board selected by the Board	Linda Ferguson, Nursing Greg Smith, CA (Smith and Marsh, Swift Current)
One member of Senate selected by the Senate Nominations Committee	Gordon Stewart, CA (KPMG)
The Provost and Vice-President Academic	Brett Fairbairn
Two members of Administration and/or Support Staff appointed by the President	Daphne Taras, Dean, Edwards School of Business Laura Kennedy, Associate Vice-President Financial Services
Two members of the GAA selected by Council	<b>Dean McNeill, Music</b> <b>Andrew Van Kessel, Animal and Poultry Science</b>
One graduate student selected by the GSA	Ehimai Ohiozebau, President, GSA
One undergraduate student selected by the USSU	TBA

---

### List of Recent Council Appointments For Presidential And Vice-Presidential Search And Review Committees

#### *September 22, 2011* **Review Committee for Provost and Vice-President Academic**

GAA representatives: Richard Schwier, Curriculum Studies; Susan Whiting, Pharmacy & Nutrition; Alex Moewes, Physics & Engineering Physics; Gerald Langner, Music  
Council representative: Trever Crowe, Associate Dean CGSR

#### *May 19, 2011* **Search Committee for President**

GAA representatives: Keith Walker, Educational Administration; Winona Wheeler, Native Studies; Michel Desautels, Physiology & Pharmacology; Ingrid Pickering, Geological Sciences

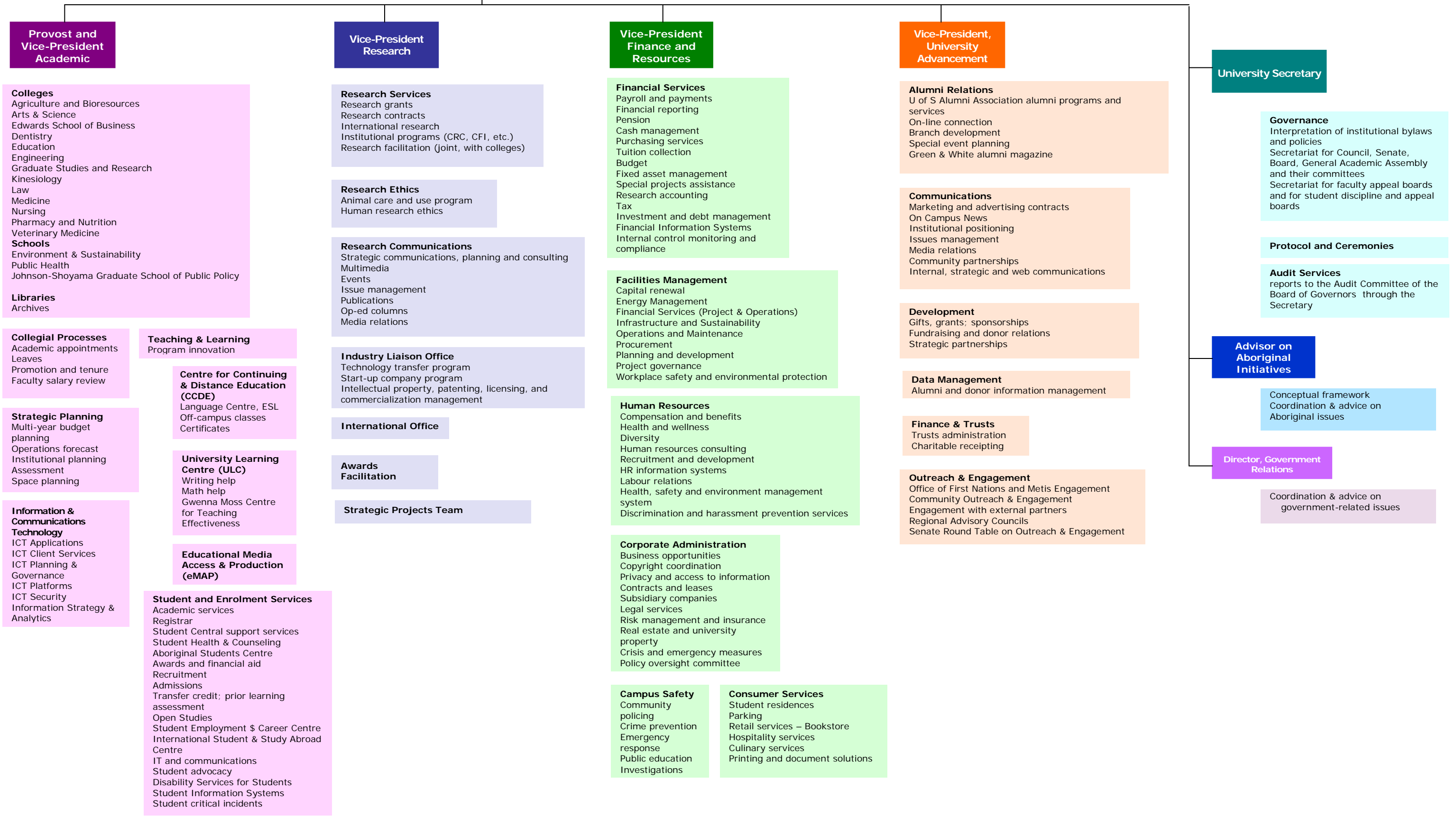
#### *February 26, 2009* **Search Committee for Vice-President Research**

Senior administrator who is member of Council: Janusz Kozinski, Dean of Engineering  
4 GAA members: Marie Battiste, Educational Foundations, College of Education; Karen Lawson, Psychology, College of Arts & Science; Nazeem Muhajarine, Community Health and Epidemiology, College of Medicine; Stephen Urquhart, Chemistry, College of Arts & Science

#### *Sept. 20, 2007* **Review Committee for the President**

Roger Pierson, Obstetrics, Gynecology & Reproductive Sciences; Sheila Schmutz, Animal & Poultry Science; Bob Lucas, Economics; Joan Borsa, Women's & Gender Studies

**President and Vice-Chancellor**



**Provost and Vice-President Academic**

**Colleges**  
 Agriculture and Bioresources  
 Arts & Science  
 Edwards School of Business  
 Dentistry  
 Education  
 Engineering  
 Graduate Studies and Research  
 Kinesiology  
 Law  
 Medicine  
 Nursing  
 Pharmacy and Nutrition  
 Veterinary Medicine  
**Schools**  
 Environment & Sustainability  
 Public Health  
 Johnson-Shoyama Graduate School of Public Policy  
**Libraries**  
 Archives

**Collegial Processes**  
 Academic appointments  
 Leaves  
 Promotion and tenure  
 Faculty salary review

**Teaching & Learning**  
 Program innovation

**Centre for Continuing & Distance Education (CCDE)**  
 Language Centre, ESL  
 Off-campus classes  
 Certificates

**University Learning Centre (ULC)**  
 Writing help  
 Math help  
 Gwenna Moss Centre for Teaching Effectiveness

**Educational Media Access & Production (eMAP)**

**Student and Enrolment Services**  
 Academic services  
 Registrar  
 Student Central support services  
 Student Health & Counseling  
 Aboriginal Students Centre  
 Awards and financial aid  
 Recruitment  
 Admissions  
 Transfer credit; prior learning assessment  
 Open Studies  
 Student Employment & Career Centre  
 International Student & Study Abroad Centre  
 IT and communications  
 Student advocacy  
 Disability Services for Students  
 Student Information Systems  
 Student critical incidents

**Information & Communications Technology**  
 ICT Applications  
 ICT Client Services  
 ICT Planning & Governance  
 ICT Platforms  
 ICT Security  
 Information Strategy & Analytics

**Strategic Planning**  
 Multi-year budget planning  
 Operations forecast  
 Institutional planning  
 Assessment  
 Space planning

**Vice-President Research**

**Research Services**  
 Research grants  
 Research contracts  
 International research  
 Institutional programs (CRC, CFI, etc.)  
 Research facilitation (joint, with colleges)

**Research Ethics**  
 Animal care and use program  
 Human research ethics

**Research Communications**  
 Strategic communications, planning and consulting  
 Multimedia  
 Events  
 Issue management  
 Publications  
 Op-ed columns  
 Media relations

**Industry Liaison Office**  
 Technology transfer program  
 Start-up company program  
 Intellectual property, patenting, licensing, and commercialization management

**International Office**

**Awards Facilitation**

**Strategic Projects Team**

**Vice-President Finance and Resources**

**Financial Services**  
 Payroll and payments  
 Financial reporting  
 Pension  
 Cash management  
 Purchasing services  
 Tuition collection  
 Budget  
 Fixed asset management  
 Special projects assistance  
 Research accounting  
 Tax  
 Investment and debt management  
 Financial Information Systems  
 Internal control monitoring and compliance

**Facilities Management**  
 Capital renewal  
 Energy Management  
 Financial Services (Project & Operations)  
 Infrastructure and Sustainability  
 Operations and Maintenance  
 Procurement  
 Planning and development  
 Project governance  
 Workplace safety and environmental protection

**Human Resources**  
 Compensation and benefits  
 Health and wellness  
 Diversity  
 Human resources consulting  
 Recruitment and development  
 HR information systems  
 Labour relations  
 Health, safety and environment management system  
 Discrimination and harassment prevention services

**Corporate Administration**  
 Business opportunities  
 Copyright coordination  
 Privacy and access to information  
 Contracts and leases  
 Subsidiary companies  
 Legal services  
 Risk management and insurance  
 Real estate and university property  
 Crisis and emergency measures  
 Policy oversight committee

**Campus Safety**  
 Community policing  
 Crime prevention  
 Emergency response  
 Public education  
 Investigations

**Consumer Services**  
 Student residences  
 Parking  
 Retail services – Bookstore  
 Hospitality services  
 Culinary services  
 Printing and document solutions

**Vice-President, University Advancement**

**Alumni Relations**  
 U of S Alumni Association alumni programs and services  
 On-line connection  
 Branch development  
 Special event planning  
 Green & White alumni magazine

**Communications**  
 Marketing and advertising contracts  
 On Campus News  
 Institutional positioning  
 Issues management  
 Media relations  
 Community partnerships  
 Internal, strategic and web communications

**Development**  
 Gifts, grants; sponsorships  
 Fundraising and donor relations  
 Strategic partnerships

**Data Management**  
 Alumni and donor information management

**Finance & Trusts**  
 Trusts administration  
 Charitable receipting

**Outreach & Engagement**  
 Office of First Nations and Metis Engagement  
 Community Outreach & Engagement  
 Engagement with external partners  
 Regional Advisory Councils  
 Senate Round Table on Outreach & Engagement

**University Secretary**

**Governance**  
 Interpretation of institutional bylaws and policies  
 Secretariat for Council, Senate, Board, General Academic Assembly and their committees  
 Secretariat for faculty appeal boards and for student discipline and appeal boards

**Protocol and Ceremonies**

**Audit Services**  
 reports to the Audit Committee of the Board of Governors through the Secretary

**Advisor on Aboriginal Initiatives**

Conceptual framework  
 Coordination & advice on Aboriginal issues

**Director, Government Relations**

Coordination & advice on government-related issues